

INCLINATOR  
COMPANY OF AMERICA

HARRISBURG, PA

ORDER REFERENCE

PROJECT: TYPICAL #750  
ELEVETTE - CABLE DRUM  
MACHINE ROOM IN ATTIC

GENERAL CONTRACTOR: -

EQUIPMENT INSTALLED BY: -

SPECIFICATIONS

MODEL: CABLE "DRUM" - 200

LANDINGS: 2

CODE(S): 5

CAPACITY: #750

SPEED: AT 30 F.P.M.±4

SUSPENSION MEANS: 2 WIRE ROPES 11,700 LBS. TRACTION  
STL. STEEL 3/8" x 8 x 19 IWRC

CAR CONSTRUCTION: 3/4" HARDWOOD VENEER

NOTE: ALL MANUFACTURER SUPPLIED CAR AND EQUIPMENT OPTIONS ARE  
NOTED ON THE CONFIRMING ORDER SHEET.

DISCLAIMER: ONCE DRAWINGS HAVE BEEN APPROVED,  
SIGNED AND WITHIN 5 DAYS OF PRODUCTION, THE  
CUSTOMER WILL BEAR ALL RESPONSIBILITY AND  
LIABILITY OF FINISHED UNIT.

PLEASE REFER ANY QUESTION TO YOUR  
SALES REPRESENTATIVE

☐ APPROVED

☐ UNAPPROVED

\_\_\_\_\_  
SIGNATURE

\_\_\_\_\_  
DATE

DWG VIEW

COVER SHEET

PART NUMBER

80205323

REV.DATE



DRAWING TITLE

CABLE DRUM IN ATTIC

DRAWING NO.

TYPICAL

PAGE:  
1/4

DRAWN BY:  
J.PETTYJOHN

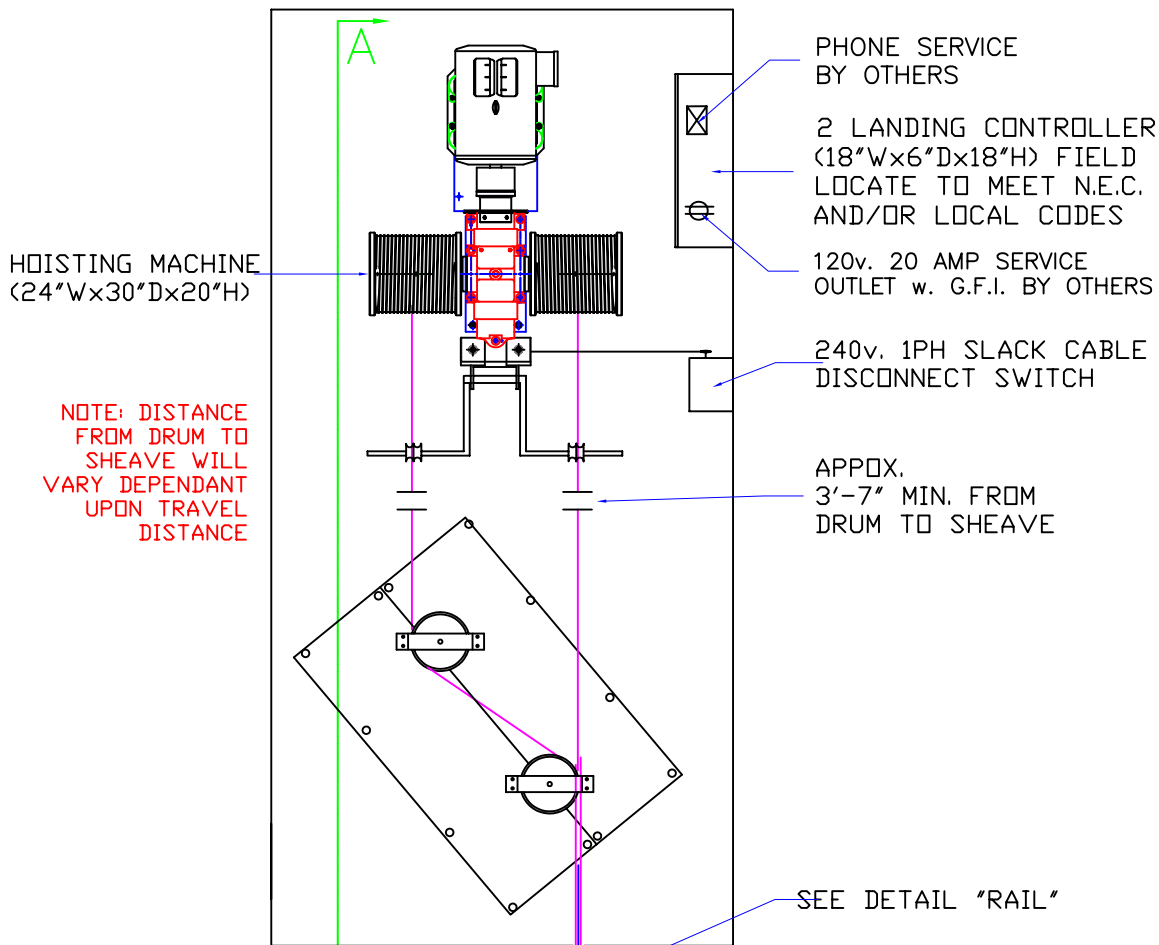
DWG. DATE  
04/02/2008

JOB OR APP.#  
#750

DEALER P.O.#  
-

DWG. SCALE  
1:24

REV.LEVEL(1-3)  
-

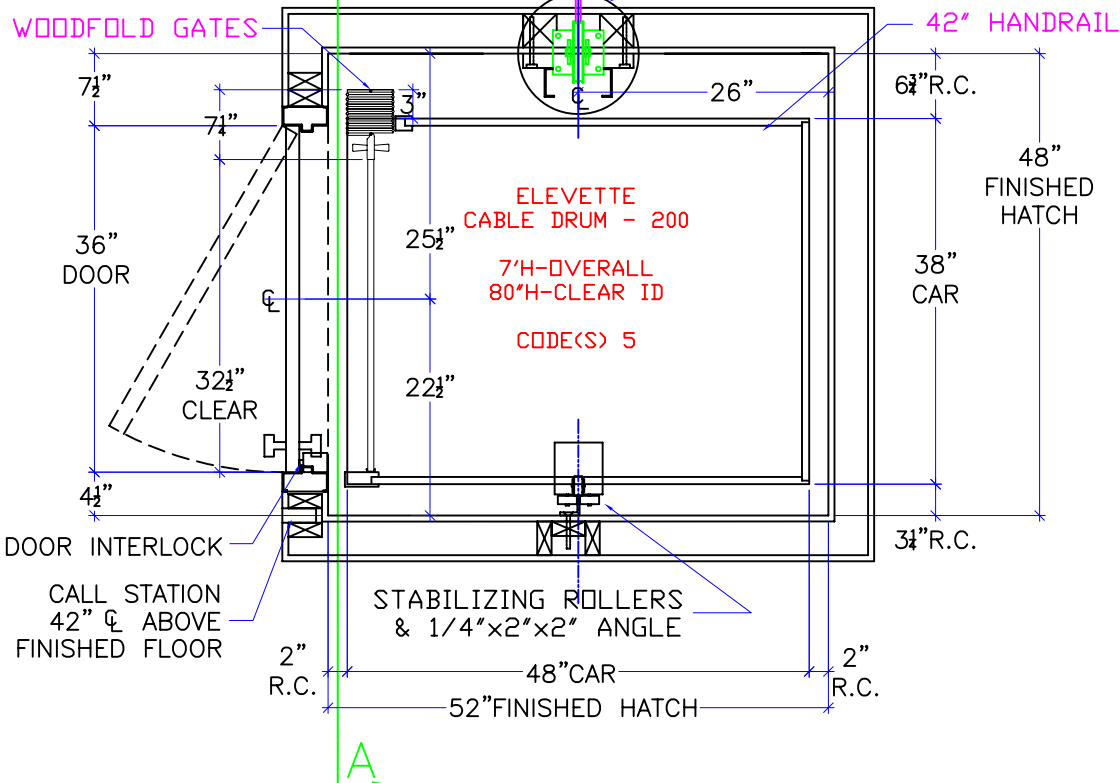


NOTE:  
G.C. TO BUILD OUT HOISTWAY  
AS NEEDED TO MAINTAIN 3'  
REQUIRED FOR STABILIZER.

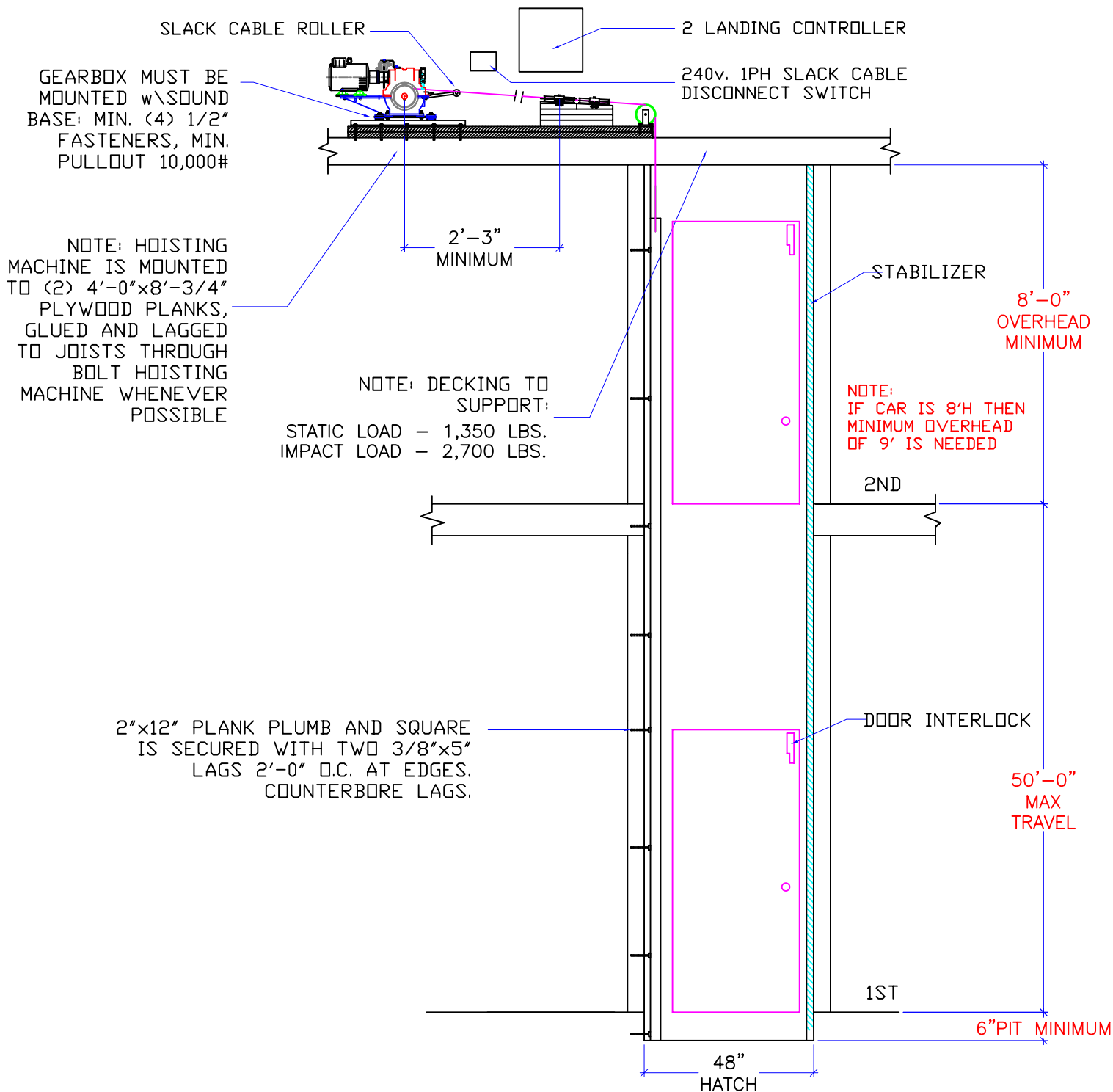
NOTE:  
ALL HOISTWAY  
CONSTRUCTION MUST COMPLY  
WITH NATIONAL, STATE, AND  
LOCAL CODES. HOISTWAY  
MUST BE PLUMB AND  
STRAIGHT FROM TOP  
TO BOTTOM WITH NO  
PROJECTIONS INTO THE  
HOISTWAY.

NOTE:  
2' RUNNING CLEARANCE  
MUST BE REDUCED TO  
1/2' MIN./1 1/2' MAX.  
AT THE LANDING  
LEVELS.

**NOTICE TO ELECTRICAL  
CONTRACTOR:**  
-ALL ELECTRICAL WIRING  
MUST BE DONE BY A  
JOURNEYMAN MECHANIC  
AND MUST MEET ALL  
NATIONAL, STATE, AND  
LOCAL CODES.  
-BRING (3) #10 W/GND  
FROM RESIDENCE INCOMING  
POWER PANEL 30AMP  
BREAKER(240V, NEUTRAL,  
GROUND) TO THE MACHINE  
ROOM.  
-BRING (2) #12 W/GND  
FROM RESIDENCE INCOMING  
POWER PANEL 20AMP GFI  
BREAKER(120V, NEUTRAL,  
GROUND) TO THE MACHINE  
ROOM.  
-REQUIRED LOW VOLTAGE  
WIRING IS SUPPLIED BY  
MANUFACTURER. ALL  
EXTENSIONS ADDITIONS,  
ETC. SHALL BE DONE WITH  
THE SAME SIZE  
AND TYPE OF WIRE AS  
ORIGINALLY SUPPLIED BY  
THE MANUFACTURER.  
-A TELEPHONE LINE  
SHALL BE SUPPLIED TO  
THE MACHINE ROOM AND  
SHALL BE CONNECTED TO A  
24 HOUR CENTRAL  
EXCHANGE.  
-ALL MEANS FOR ACCESS  
TO EQUIPMENT SHALL BE  
PROVIDED WITH A LOCK.  
ALL SHAFT DOORS MUST BE  
INTERLOCKED.



DWG VIEW				PART NUMBER		REV.DATE	
HOISTWAY LAYOUT				80205323		-	
DRAWING TITLE				DRAWING NO.		-	
CABLE DRUM IN ATTIC				TYPICAL		-	
PAGE:	DRAWN BY:	DWG. DATE	JOB OR APP.#	DEALER P.O.#	DWG. SCALE	REV.LEVEL(1-3)	
2/4	J.PETTYJOHN	04/02/2008	#750	-	1:24	-	



DWG VIEW

SECTION A-A

PART NUMBER

80205323

REV.DATE

-  
-  
-

DRAWING TITLE

CABLE DRUM IN ATTIC

DRAWING NO.

TYPICAL

PAGE:  
3/4

DRAWN BY:  
J.PETTYJOHN

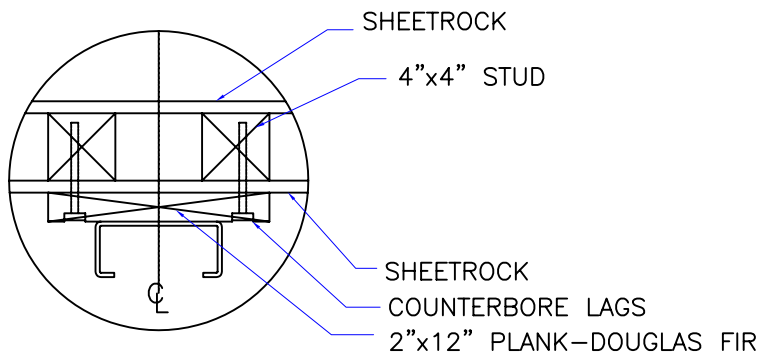
DWG. DATE  
04/02/2008

JOB OR APP.#  
#750

DEALER P.O.#  
-

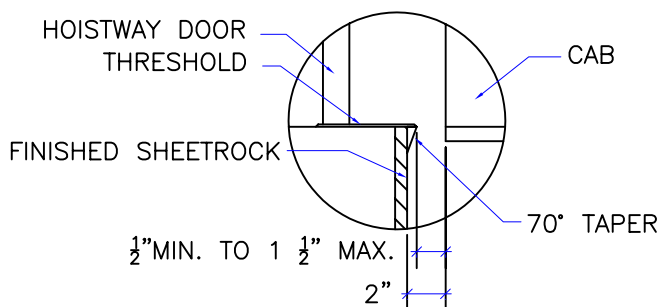
DWG. SCALE  
1:24

REV.LEVEL(1-3)  
-



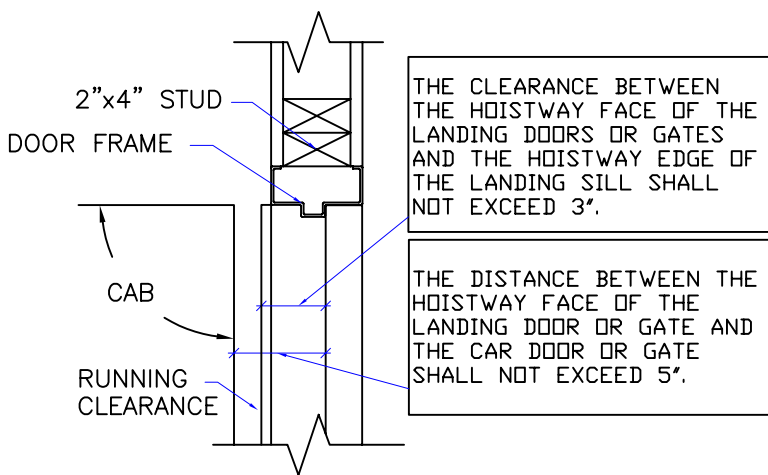
NOTE:  
WHEN STUD AND SHEETROCK CONSTRUCTION  
IS USED ON THE GUIDE RAIL SUPPORT WALL  
4"x4" STUDDING IS NEEDED BEHIND THE  
2"x12" PLANK.

### RAIL DETAIL

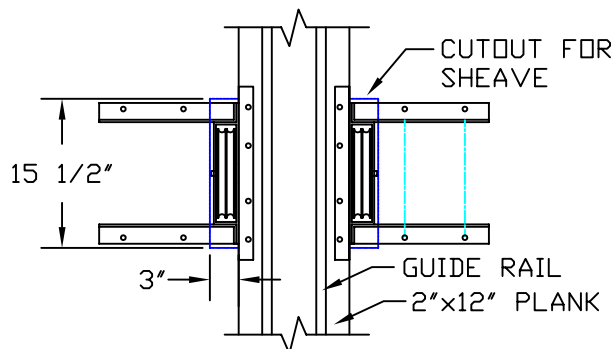
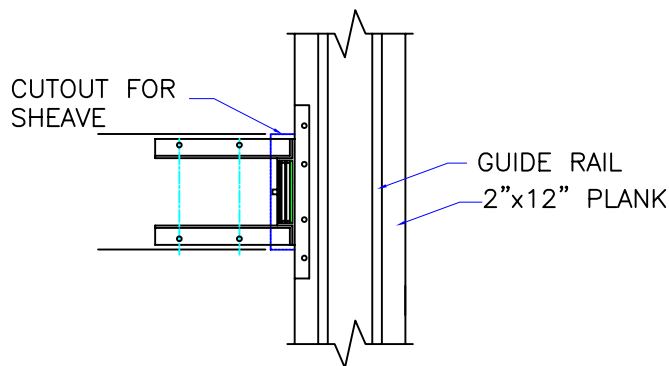


DOOR SILLS TO BE INSTALLED BY G.C.  
AFTER LIFT SUPPLIER HAS INSTALLED  
A RUNNING PLATFORM. SILL TO BE  
BROUGHT OUT TO NOT LESS THAN 1/2"  
AND NOT MORE THAN 1 1/2" TO THE  
RUNNING PLATFORM.

### SILL DETAIL



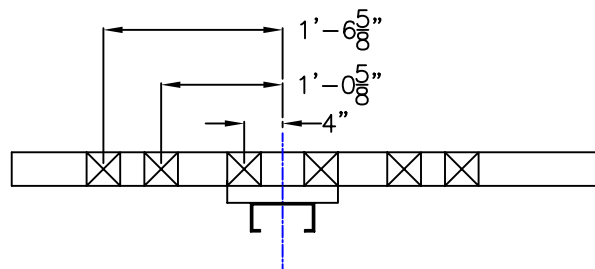
### DOOR FRAME DETAIL



### CUTOUT DETAIL

(SINGLE/ DOUBLE DRUM)  
(IF APPLIES)

### MIRROR OPPOSITE SIDE



STUD LOCATIONS FOR THRU THE WALL SHEAVES  
(IF APPLIES)

1. REACTIONS ON ALL SHEAVES AND MOUNTINGS  
STATIC = 1,350 LBS.  
IMPACT = 2,700 LBS.
2. FASTENING OF HOISTING MACHINE TO CONCRETE  
1/2 X 3 HILTI BOLTS (OR EQUAL)
3. RAIL FASTENING TO 2"x12" PLANK  
#14 x 1 3/4" TYPE A S.M.S. RAIL IS PRE-  
DRILLED AT FACTORY.
4. BOLT FASTENING OF CAR TO TROLLEY  
1/2" - 13 x 4" SOCKET HD CAP SCREWS

### TECHNICAL DATA

DWG VIEW

DETAILS, DATA, CODES

PART NUMBER

80205323

REV.DATE

-

-

-

DRAWING TITLE

CABLE DRUM IN ATTIC

DRAWING NO.

TYPICAL

PAGE:

4/4

DRAWN BY:

J.PETTYJOHN

DWG. DATE

04/02/2008

JOB OR APP.#

#750

DEALER P.O.#

-

DWG. SCALE

1:24

REV.LEVEL(1-3)

-